

BRICKLAYER (MASON)

Occupation Description

“Mason” means a person who places and repairs mortar, bricks, concrete blocks, steel reinforcing, masonry grout, stone units pre-cast concrete units, refractory units and materials, caulking, masonry flashing and membranes and such other work as is usually done by a mason.

For detailed information on the scope of knowledge and skills taught and assessed in this program refer to the Program Outline, available on the ITA website.

Pathways to Certification

In BC, an individual can become certified as a Bricklayer (Mason) by completing the Bricklayer (Mason) program or by challenging the certification. Apprenticeship programs are for individuals who have an employer to sponsor them and challenge programs are for individuals who have extensive experience working in the occupation and wish to challenge the certification.

Youth can begin apprenticeship in high school through either the Secondary School Apprenticeship (SSA) program or the ACE IT program. The SSA program is available for any trade if an employer is willing to sponsor the student. Trades offered through ACE IT vary by region; contact your local school district to find out which technical training programs are being offered through ACE IT in your region.

Foundation programs, where available, provide adults and youth who do not have work experience or employer sponsorship with an opportunity to gain the knowledge and skills needed to enter the occupation. Individuals who wish to enroll in a Foundation program must register directly with the training provider.

Recommended Education

The following education is recommended for apprentices entering this occupation. These are not prerequisites, but rather a desired level of skill or knowledge that will contribute to success in the industry.

- Grade 10 or equivalent including English 10, Mathematics 10, & Science10
- Preferred: Grade 12

ITA Registration

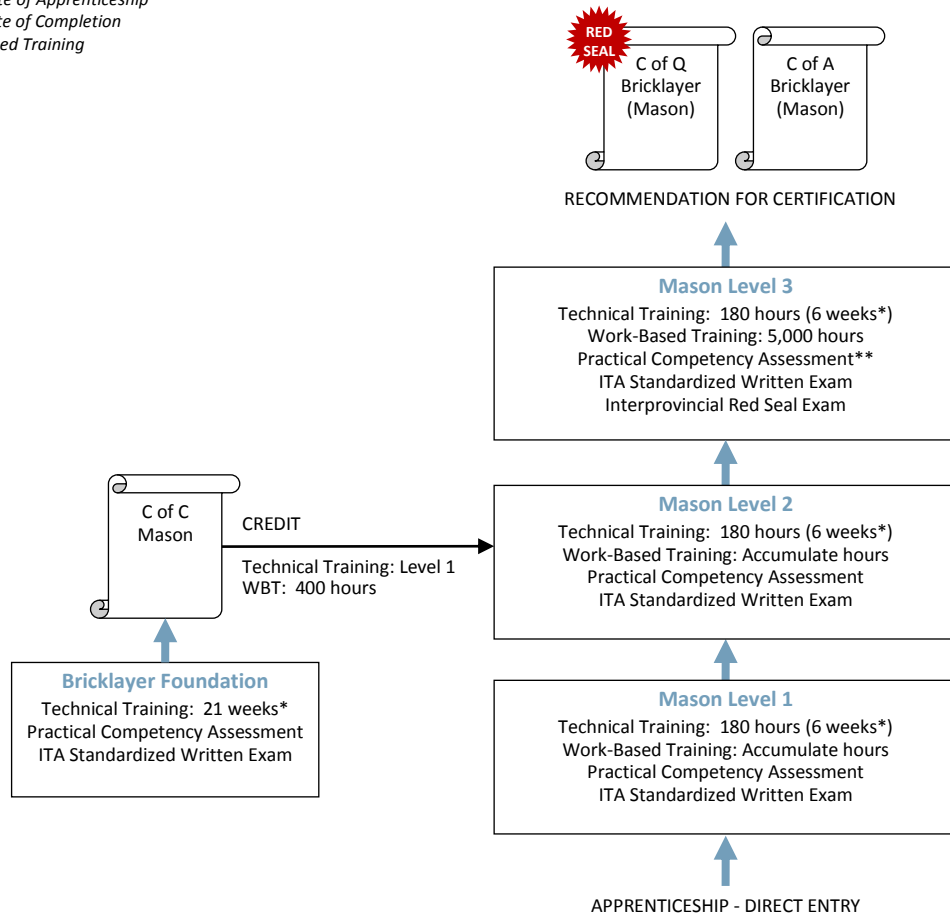
Individuals who wish to begin an apprenticeship in this program must register with ITA along with their sponsor. Application forms for all programs are available from the ITA website. Online registration is also available for most programs through the ITA website.

Those who wish to challenge the Bricklayer (Mason) certification must complete the Bricklayer (Mason) Challenge Application and submit it to ITA. Challenge applications are assessed for proof of workplace hours and scope of experience prior to acceptance of the individual into the Challenge pathway.

Apprenticeship Pathway

This graphic provides an overview of the Bricklayer (Mason) apprenticeship pathway.

C of Q = Certificate of Qualification
C of A = Certificate of Apprenticeship
C of C = Certificate of Completion
WBT = Work-Based Training



*Suggested duration based on 30-hour week

Level 3 Practical Competency Assessment **must be completed prior to writing the Interprovincial Red Seal Exam

CROSS-PROGRAM CREDITS

Individuals who hold the credentials listed below are entitled to receive partial credit toward the completion requirements of this program

None

Apprenticeship Program Standards

- Credentials Awarded**
- Bricklayer (Mason) – Certificate of Qualification with Red Seal endorsement
 - Bricklayer (Mason) – Certificate of Apprenticeship

- ITA Registration Prerequisites**
- Agreement signed by the employer to sponsor the apprentice

Completion Requirements Certification as a Mason is awarded upon successful completion of:

Requirement	Level of Achievement Required
Technical Training	Minimum 70% in each level of technical training: <ul style="list-style-type: none"> ▪ Level 1: 180 hours (or 6 weeks*), practical competency assessment and ITA standardized written exam ▪ Level 2: 180 hours (or 6 weeks*), practical competency assessment and ITA standardized written exam ▪ Level 3: 180 hours (or 6 weeks*), practical competency assessment** and ITA standardized written exam
Interprovincial Red Seal Exam	<ul style="list-style-type: none"> ▪ Minimum 70%
Recommendation for Certification	<ul style="list-style-type: none"> ▪ Recommendation for certification signed by the Sponsor and an individual holding credentials eligible for sign-off authority

*(*Assuming 30 hours in school per week)*

*(**Level 3 Practical Competency Assessment **must** be completed prior to writing the Interprovincial Red Seal Exam)*

Program Duration Duration varies depending on how training is delivered, but the program generally takes 4 years to complete.

The technical training requirement is typically met through block-release training (full-time, at school) delivered by an ITA-approved training provider. It can also be met through approved alternative training models (e.g., distance education, online, part-time) and/or level challenge where these options are available.

- Sign-off Authority** Credentials eligible to sign-off on the Recommendation for Certification:
- Bricklayer (Mason) – Certificate of Qualification
 - Bricklayer (Mason) – Interprovincial Red Seal endorsement
 - ITA-issued letter authorizing supervision and sign-off of apprentices in this occupation

- Challenging a Level** The following levels of technical training can be challenged for advanced placement in this program:
- Level 1
 - Level 2

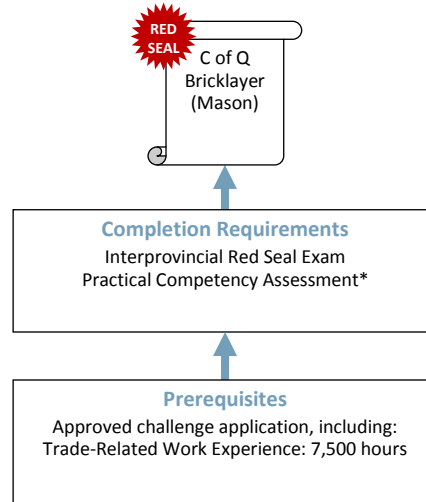
Cross-Program Credits Individuals who hold the credentials listed below are entitled to receive partial credit toward the completion requirements of this program

Credential	Credit(s) Granted
None	None

Challenge Pathway

This graphic provides an overview of the Bricklayer (Mason) challenge pathway.

C of Q = Certificate of Qualification



*Practical Competency Assessment **must** be completed prior to writing the Interprovincial Red Seal Exam

CROSS-PROGRAM CREDITS

Individuals who hold the credentials listed below are entitled to receive partial credit toward the completion requirements of this program

None

Challenge Program Standards

Credentials Awarded Bricklayer (Mason) – Certificate of Qualification with Red Seal endorsement

ITA Registration Prerequisites An approved Challenge Application, which includes:

- 7,500 documented hours of directly related experience working in the occupation

Credit for Prior Learning Individuals who hold the credentials listed below are considered to have met the prerequisites for challenging this program

- None

Completion Requirements Certification as a Bricklayer (Mason) is awarded upon successful completion of:

Requirement	Level of Achievement Required
Interprovincial Red Seal Exam	<ul style="list-style-type: none"> Minimum 70%
Standardized Practical assessment (Practical Competency Assessment must be completed prior to writing the Interprovincial Red Seal Exam)	<ul style="list-style-type: none"> Declared competent



Foundation Program

Refer to the Apprenticeship pathway diagram for this program to see how the Bricklayer Foundation program fits into apprenticeship.

Foundation Program Standards

Credentials Awarded	Bricklayer – Certificate of Completion						
Enrollment Prerequisites	Contact training provider. Prerequisites vary between training institutions						
Completion Requirements	<p>A Certificate of Completion in this program is awarded upon successful completion of:</p> <table border="1" style="width: 100%; border-collapse: collapse;"> <thead> <tr> <th style="text-align: left;">Requirement</th> <th style="text-align: left;">Level of Achievement Required</th> </tr> </thead> <tbody> <tr> <td>Technical Training and ITA standardized written exam</td> <td> <ul style="list-style-type: none"> ▪ Minimum 70% </td> </tr> <tr> <td>Level 1 Standardized Practical Assessment</td> <td> <ul style="list-style-type: none"> ▪ Competency </td> </tr> </tbody> </table>	Requirement	Level of Achievement Required	Technical Training and ITA standardized written exam	<ul style="list-style-type: none"> ▪ Minimum 70% 	Level 1 Standardized Practical Assessment	<ul style="list-style-type: none"> ▪ Competency
Requirement	Level of Achievement Required						
Technical Training and ITA standardized written exam	<ul style="list-style-type: none"> ▪ Minimum 70% 						
Level 1 Standardized Practical Assessment	<ul style="list-style-type: none"> ▪ Competency 						
Program Duration	Duration varies depending on how training is delivered, but program generally takes 21 weeks to complete, assuming 30 hours in school per week						
Credit toward Apprenticeship	<p>Individuals who complete the Bricklayer Foundation program will receive the following credit toward completion of the Bricklayer (Mason) apprenticeship program:</p> <ul style="list-style-type: none"> ▪ Technical Training: Level 1 ▪ Work-Based Training: 400 hours 						

Supporting Documents

Bricklayer (Mason) Program Outline (2012) – Defines the full scope of knowledge and skills required to competently perform the occupation in BC. Available from the ITA website.

Bricklayer (Mason) National Occupational Analysis (2011) – Prepared by industry experts, under the guidance of the federal government, for Red Seal trades to define the national standard of competence for the trade. Available from the Red Seal website: www.red-seal.ca.

Contacts

The **Industry Training Authority** (ITA) manages B.C.'s industry training and apprenticeship programs. Contact ITA Customer service if you have any questions regarding registration, examinations or certification for this program.

Telephone: 778-328-8700
Toll Free (within BC): 1-866-660-6011
Website: www.itabc.ca

Fax: 778-328-8701
Email: customerservice@itabc.ca

Revision History

The standards for this program were reviewed and/or updated on the dates below.

Program Standards Approved: September 2009
Updated: July 2009
Updated: October 2009

Program Profiles are updated regularly. Visit www.itabc.ca for the most current version.