

## LANDSCAPE HORTICULTURIST

---

### Occupation Description

"Landscape Horticulturists" identify, propagate, cultivate, grow and maintain plants, and manage injured and diseased trees and plants. They create and modify landscapes by measuring, designing, and interpreting plans. They construct and maintain gardens, parks, golf courses and other landscape environments. Landscape horticulturists install and maintain hard landscape elements such as retaining walls, patios, walkways and water features. In addition, they advise clients on issues related to horticulture and landscape construction. They are employed by landscape designers, architects and contractors, lawn service and tree care establishments, recreation facilities, golf courses, parks, nurseries, greenhouses, and municipal, provincial and federal governments. They may also be self-employed. For detailed information on the scope of knowledge and skills taught and assessed in this program refer to the Program Outline, available on the ITA website.

### Pathways to Certification

In BC, an individual can become certified as a Landscape Horticulturist by completing the Landscape Horticulturist program or by challenging the certification. Apprenticeship programs are for individuals who have an employer to sponsor them and the challenge programs are for individuals who have extensive experience working in the occupation and wish to challenge the certification.

Youth can begin an apprenticeship in high school through the Youth Train in Trades or Youth Work in Trades programs. The Youth Work in Trades program is available for any trade if an employer is willing to sponsor the student. Trades offered through the Youth Train in Trades vary by region; contact your local school district to find out which technical training programs are being offered through the Youth Train in Trades program in your region.

Foundation programs, where available, provide adults and youth who do not have work experience or employer sponsorship with an opportunity to gain the knowledge and skills needed to enter the occupation. Individuals who wish to enroll in a Foundation program must register directly with the training provider.

### Recommended Education

The following education is recommended for apprentices entering this occupation. These are not prerequisites, but rather a desired level of skill or knowledge that will contribute to success in the industry.

- Grade 10 or equivalent, including English 10, Math 10 and Science 10
- Preferred: Grade 12

### ITA Registration

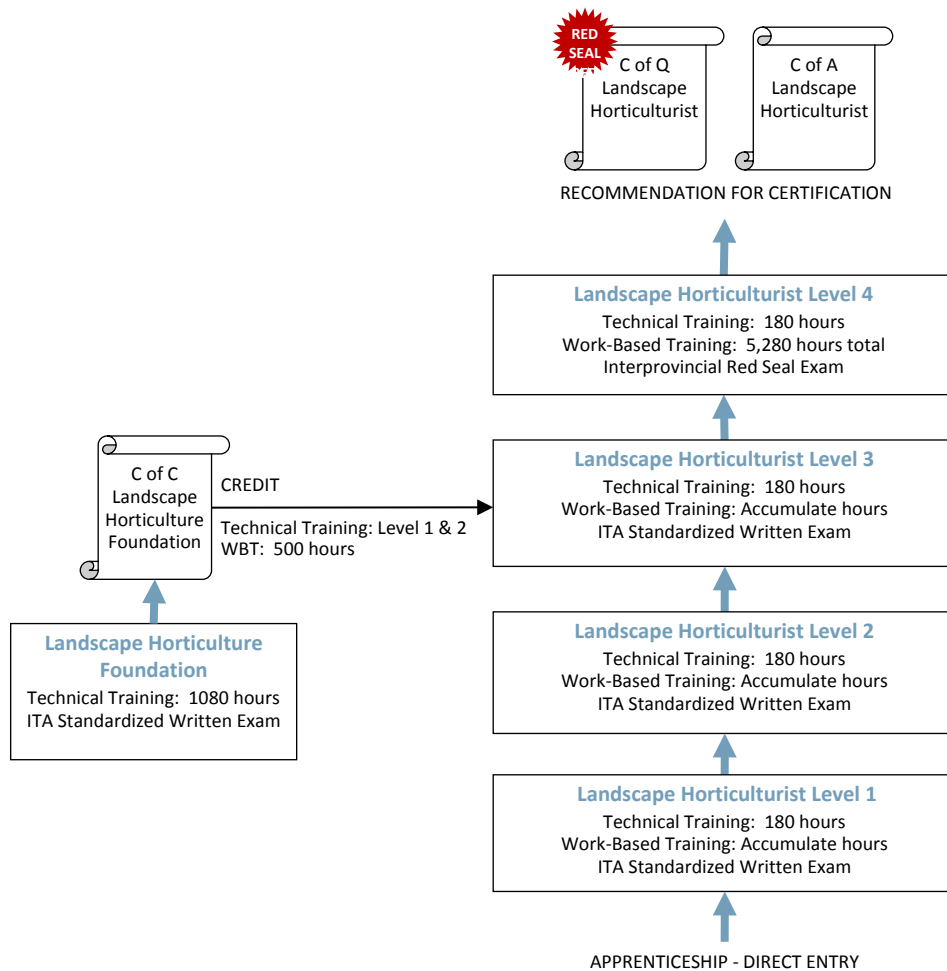
Individuals who wish to begin an apprenticeship in this program must register with ITA along with their sponsor. Application forms for all programs are available from the ITA website. Online registration is also available for most programs through the ITA website.

Those who wish to challenge the Landscape Horticulturist certification must complete the Landscape Horticulturist Challenge Application and submit it to ITA. Challenge applications are assessed for proof of workplace hours and scope of experience prior to acceptance of the individual into the Challenge pathway.

### Apprenticeship Pathway

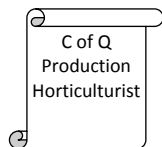
This graphic provides an overview of the Landscape Horticulturist apprenticeship pathway.

*C of Q = Certificate of Qualification*  
*C of A = Certificate of Apprenticeship*  
*C of C = Certificate of Completion*  
*WBT = Work-Based Training*

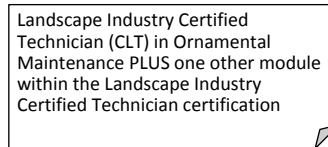


**CROSS-PROGRAM CREDITS**

Individuals who hold the credentials listed below are entitled to receive partial credit toward the completion requirements of this program



Work Experience: 3,240 hours



Technical Training: None  
Work-Based Training: 1,000 hours

### Apprenticeship Program Standards

<b>Credentials Awarded</b>	<ul style="list-style-type: none"> <li>▪ Landscape Horticulturist – Certificate of Qualification with Interprovincial Red Seal endorsement</li> <li>▪ Landscape Horticulturist – Certificate of Apprenticeship</li> </ul>										
<b>ITA Registration Prerequisites</b>	<ul style="list-style-type: none"> <li>▪ Agreement signed by the employer to sponsor the apprentice</li> </ul>										
<b>Completion Requirements</b>	<p>Certification as a Landscape Horticulturist is awarded upon successful completion of:</p> <table style="width: 100%; border-collapse: collapse;"> <thead> <tr> <th style="text-align: left; border-bottom: 1px solid black;">Requirement</th> <th style="text-align: left; border-bottom: 1px solid black;">Level of Achievement Required</th> </tr> </thead> <tbody> <tr> <td style="border-bottom: 1px solid black;">Technical Training</td> <td style="border-bottom: 1px solid black;">                     Minimum 70% in each level of technical training:                     <ul style="list-style-type: none"> <li>▪ Level 1: 180 hours and ITA standardized written exam</li> <li>▪ Level 2: 180 hours and ITA standardized written exam</li> <li>▪ Level 3: 180 hours and ITA standardized written exam</li> <li>▪ Level 4: 180 hours</li> </ul> </td> </tr> <tr> <td style="border-bottom: 1px solid black;">Interprovincial Red Seal Exam</td> <td style="border-bottom: 1px solid black;"> <ul style="list-style-type: none"> <li>▪ Minimum 70%</li> </ul> </td> </tr> <tr> <td style="border-bottom: 1px solid black;">Work-Based Training</td> <td style="border-bottom: 1px solid black;"> <ul style="list-style-type: none"> <li>▪ 5,280 hours</li> </ul> </td> </tr> <tr> <td style="border-bottom: 1px solid black;">Recommendation for Certification</td> <td style="border-bottom: 1px solid black;"> <ul style="list-style-type: none"> <li>▪ Recommendation for certification signed by the Sponsor and an individual holding credentials eligible for sign-off authority</li> </ul> </td> </tr> </tbody> </table>	Requirement	Level of Achievement Required	Technical Training	Minimum 70% in each level of technical training: <ul style="list-style-type: none"> <li>▪ Level 1: 180 hours and ITA standardized written exam</li> <li>▪ Level 2: 180 hours and ITA standardized written exam</li> <li>▪ Level 3: 180 hours and ITA standardized written exam</li> <li>▪ Level 4: 180 hours</li> </ul>	Interprovincial Red Seal Exam	<ul style="list-style-type: none"> <li>▪ Minimum 70%</li> </ul>	Work-Based Training	<ul style="list-style-type: none"> <li>▪ 5,280 hours</li> </ul>	Recommendation for Certification	<ul style="list-style-type: none"> <li>▪ Recommendation for certification signed by the Sponsor and an individual holding credentials eligible for sign-off authority</li> </ul>
Requirement	Level of Achievement Required										
Technical Training	Minimum 70% in each level of technical training: <ul style="list-style-type: none"> <li>▪ Level 1: 180 hours and ITA standardized written exam</li> <li>▪ Level 2: 180 hours and ITA standardized written exam</li> <li>▪ Level 3: 180 hours and ITA standardized written exam</li> <li>▪ Level 4: 180 hours</li> </ul>										
Interprovincial Red Seal Exam	<ul style="list-style-type: none"> <li>▪ Minimum 70%</li> </ul>										
Work-Based Training	<ul style="list-style-type: none"> <li>▪ 5,280 hours</li> </ul>										
Recommendation for Certification	<ul style="list-style-type: none"> <li>▪ Recommendation for certification signed by the Sponsor and an individual holding credentials eligible for sign-off authority</li> </ul>										
<b>Program Duration</b>	<p>Duration varies depending on how training is delivered, but the program generally takes 4 years to complete.</p> <p>The technical training requirement is typically met through block-release training (full-time, at school) delivered by an ITA-approved training provider. It can also be met through approved alternative training models (e.g., distance education, online, part-time) and/or level challenge where these options are available.</p>										
<b>Sign-off Authority</b>	<p>Credentials eligible to sign-off on the Recommendation for Certification:</p> <ul style="list-style-type: none"> <li>▪ Landscape Horticulturist – Certificate of Qualification</li> <li>▪ Landscape Horticulturist – Interprovincial Red Seal endorsement</li> <li>▪ ITA-issued letter authorizing supervision and sign-off of apprentices in this occupation</li> </ul>										
<b>Challenging a Level</b>	<p>The following levels of technical training can be challenged for advanced placement in this program:</p> <p>Level</p> <ul style="list-style-type: none"> <li>▪ Level 1</li> <li>▪ Level 2</li> <li>▪ Level 3</li> </ul>										



**Apprenticeship Program Standards**

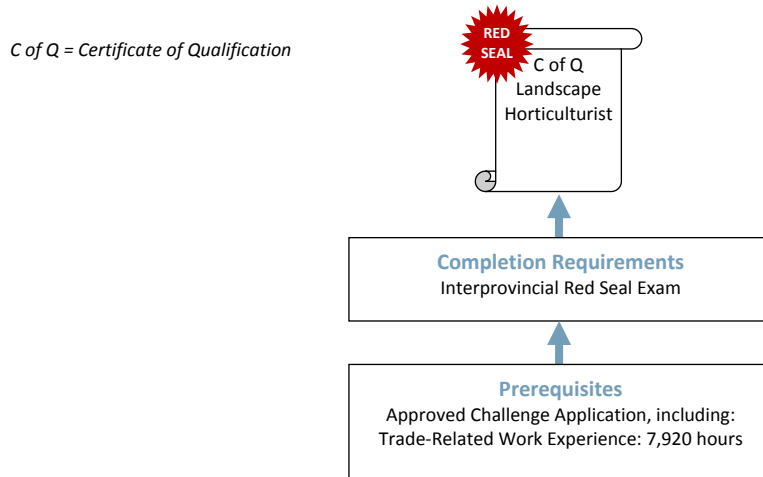
**Cross-Program Credits**

Individuals who hold the credentials listed below are entitled to receive partial credit toward the completion requirements of this program

Credential	Credit(s) Granted
Production Horticulturist – Certificate of Qualification	<ul style="list-style-type: none"> <li>▪ Work Experience: 3,240 hours</li> </ul>
Landscape Industry Certified Technician (CLT) in Ornamental Maintenance plus one other module within the CLT program	<ul style="list-style-type: none"> <li>▪ Technical Training: None</li> <li>▪ Work-Based Training: 1,000 hours</li> </ul>

## Challenge Pathway

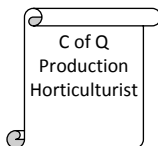
This graphic provides an overview of the Landscape Horticulturist challenge pathway.



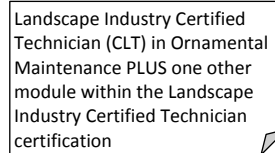

---

### CREDIT FOR PRIOR LEARNING

*Individuals who hold the credentials listed below are entitled to receive partial credit toward the completion requirements of this program*



Work Experience: 3,240 hours



Work Experience: 1,000 hours



### Challenge Program Standards

**Credentials Awarded** Landscape Horticulturist – Certificate of Qualification with Interprovincial Red Seal endorsement

**ITA Registration Prerequisites** An approved Challenge Application, which includes:  
 ▪ 7,920 documented hours of directly related experience working in the occupation

**Credit for Prior Learning** Individuals who hold the credentials listed below are considered to have met, or partially met, the prerequisites for challenging this program:

Credential	Credit(s) Granted
Production Horticulturist – Certificate of Qualification	▪ Work Experience: 3,240 hours
Landscape Industry Certified Technician (CLT) certification in Ornamental Maintenance plus one other module within the CLT program	▪ Work Experience: 1,000 hours

**Completion Requirements** Certification as a Landscape Horticulturist is awarded upon successful completion of:

Requirement	Level of Achievement Required
Interprovincial Red Seal Exam	▪ Minimum 70%

## Foundation Program

Refer to the Apprenticeship pathway credentialing model for this program to see how the Horticulture Technician Foundation program leads to apprenticeship in this trade.

### Foundation Program Standards

<b>Credentials Awarded</b>	Landscape Horticulture– Certificate of Completion	
<b>Enrollment Prerequisites</b>	Contact training provider. Prerequisites vary between training institutions	
<b>Completion Requirements</b>	A Certificate of Completion in this program is awarded upon successful completion of:	
	<b>Requirement</b>	<b>Level of Achievement Required</b>
	Technical Training	Minimum 70% in: <ul style="list-style-type: none"> <li>• Level 1 and 2 technical training, including ITA Standardized Horticulturist Foundation Exam</li> </ul>
<b>Program Duration</b>	Duration varies depending on how training is delivered, but program takes 1080 hours	
<b>Credit toward Apprenticeship</b>	Individuals who complete the Landscape Horticulture Foundation program will receive the following credit toward completion of the Landscape Horticulturist apprenticeship program: <ul style="list-style-type: none"> <li>▪ Technical Training: Level 1 and Level 2</li> <li>▪ Work-Based Training: 500 hours</li> </ul>	



## Supporting Documents

BC Landscape Horticulturist Program Outline (2013) – Defines the full scope of knowledge and skills required to competently perform the occupation in BC. Available from the ITA website.

Landscape Horticulturist National Occupational Analysis (2010) – Prepared by industry experts, under the guidance of the federal government, for Red Seal trades to define the national standard of competence for the trade. Available from the Red Seal website: [www.red-seal.ca](http://www.red-seal.ca).

## Contacts

The **Industry Training Authority** (ITA) manages B.C.'s industry training and apprenticeship programs. Contact ITA Customer service if you have any questions regarding registration, examinations or certification for this program.

Telephone: 778-328-8700  
Toll Free (within BC): 1-866-660-6011  
Website: [www.itabc.ca](http://www.itabc.ca)

Fax: 778-328-8701  
Email: [customerservice@itabc.ca](mailto:customerservice@itabc.ca)

## Revision History

The standards for this program were reviewed and/or updated on the dates below.

Program Standards Approved: March 2002  
Updated: January 2006  
November 2008  
June 2010  
December 2011  
May 2013  
Program Standards Approved: October 2017

Program Profiles are updated regularly. Visit [www.itabc.ca](http://www.itabc.ca) for the most current version.