

LANDSCAPE HORTICULTURIST

Occupation Description

“Landscape Horticulturists” identify, propagate, cultivate, grow and maintain plants, and manage injured and diseased trees and plants. They create and modify landscapes by measuring, designing, and interpreting plans. They construct and maintain gardens, parks, golf courses and other landscape environments. Landscape horticulturists install and maintain hard landscape elements such as retaining walls, patios, walkways and water features. In addition, they advise clients on issues related to horticulture and landscape construction. They are employed by landscape designers, architects and contractors, lawn service and tree care establishments, recreation facilities, golf courses, parks, nurseries, greenhouses, and municipal, provincial and federal governments. They may also be self-employed. For detailed information on the scope of knowledge and skills taught and assessed in this program refer to the Program Outline, available on the ITA website.

Pathways to Certification

In BC, an individual can become certified as a Landscape Horticulturist by completing the Landscape Horticulturist program or by challenging the certification. Apprenticeship programs are for individuals who have an employer to sponsor them and the challenge programs are for individuals who have extensive experience working in the occupation and wish to challenge the certification.

Youth can begin an apprenticeship in high school through the Youth Train in Trades or Youth Work in Trades programs. The Youth Work in Trades program is available for any trade if an employer is willing to sponsor the student. Trades offered through the Youth Train in Trades vary by region; contact your local school district to find out which technical training programs are being offered through the Youth Train in Trades program in your region.

Foundation programs, where available, provide adults and youth who do not have work experience or employer sponsorship with an opportunity to gain the knowledge and skills needed to enter the occupation. Individuals who wish to enroll in a Foundation program must register directly with the training provider.

Recommended Education

The following education is recommended for apprentices entering this occupation. These are not prerequisites, but rather a desired level of skill or knowledge that will contribute to success in the industry.

- Grade 10 or equivalent, including English 10, Math 10 and Science 10
- Preferred: Grade 12

ITA Registration

Individuals who wish to begin an apprenticeship in this program must register with ITA along with their sponsor. Application forms for all programs are available from the ITA website. Online registration is also available for most programs through the ITA website.

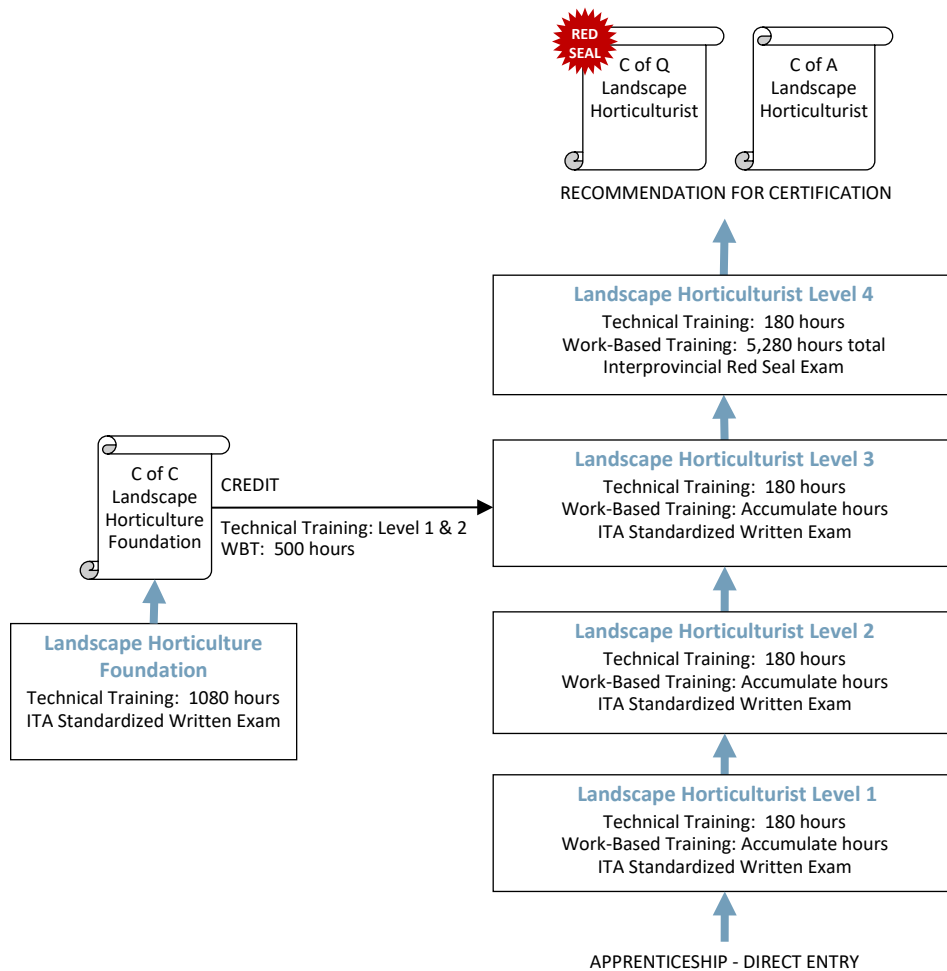
Those who wish to challenge the Landscape Horticulturist certification must complete the Landscape Horticulturist Challenge Application and submit it to ITA. Challenge applications are assessed for proof of workplace hours and scope of experience prior to acceptance of the individual into the Challenge pathway.



Apprenticeship Pathway

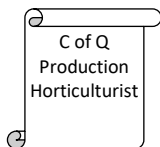
This graphic provides an overview of the Landscape Horticulturist apprenticeship pathway.

C of Q = Certificate of Qualification
C of A = Certificate of Apprenticeship
C of C = Certificate of Completion
WBT = Work-Based Training

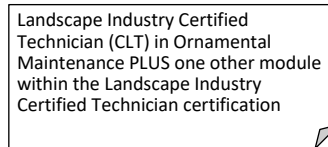


CROSS-PROGRAM CREDITS

Individuals who hold the credentials listed below are entitled to receive partial credit toward the completion requirements of this program



Work Experience: 3,240 hours



Technical Training: None
 Work-Based Training: 1,000 hours



Apprenticeship Program Standards

Credentials Awarded	<ul style="list-style-type: none"> ▪ Landscape Horticulturist – Certificate of Qualification with Interprovincial Red Seal endorsement ▪ Landscape Horticulturist – Certificate of Apprenticeship 										
ITA Registration Prerequisites	<ul style="list-style-type: none"> ▪ Agreement signed by the employer to sponsor the apprentice 										
Completion Requirements	<p>Certification as a Landscape Horticulturist is awarded upon successful completion of:</p> <table style="width: 100%; border-collapse: collapse;"> <thead> <tr> <th style="text-align: left; width: 50%;">Requirement</th> <th style="text-align: left; width: 50%;">Level of Achievement Required</th> </tr> </thead> <tbody> <tr> <td>Technical Training</td> <td> Minimum 70% in each level of technical training: <ul style="list-style-type: none"> ▪ Level 1: 180 hours and ITA standardized written exam ▪ Level 2: 180 hours and ITA standardized written exam ▪ Level 3: 180 hours and ITA standardized written exam ▪ Level 4: 180 hours </td> </tr> <tr> <td>Interprovincial Red Seal Exam</td> <td> <ul style="list-style-type: none"> ▪ Minimum 70% </td> </tr> <tr> <td>Work-Based Training</td> <td> <ul style="list-style-type: none"> ▪ 5,280 hours </td> </tr> <tr> <td>Recommendation for Certification</td> <td> <ul style="list-style-type: none"> ▪ Recommendation for certification signed by the Sponsor and an individual holding credentials eligible for sign-off authority </td> </tr> </tbody> </table>	Requirement	Level of Achievement Required	Technical Training	Minimum 70% in each level of technical training: <ul style="list-style-type: none"> ▪ Level 1: 180 hours and ITA standardized written exam ▪ Level 2: 180 hours and ITA standardized written exam ▪ Level 3: 180 hours and ITA standardized written exam ▪ Level 4: 180 hours 	Interprovincial Red Seal Exam	<ul style="list-style-type: none"> ▪ Minimum 70% 	Work-Based Training	<ul style="list-style-type: none"> ▪ 5,280 hours 	Recommendation for Certification	<ul style="list-style-type: none"> ▪ Recommendation for certification signed by the Sponsor and an individual holding credentials eligible for sign-off authority
Requirement	Level of Achievement Required										
Technical Training	Minimum 70% in each level of technical training: <ul style="list-style-type: none"> ▪ Level 1: 180 hours and ITA standardized written exam ▪ Level 2: 180 hours and ITA standardized written exam ▪ Level 3: 180 hours and ITA standardized written exam ▪ Level 4: 180 hours 										
Interprovincial Red Seal Exam	<ul style="list-style-type: none"> ▪ Minimum 70% 										
Work-Based Training	<ul style="list-style-type: none"> ▪ 5,280 hours 										
Recommendation for Certification	<ul style="list-style-type: none"> ▪ Recommendation for certification signed by the Sponsor and an individual holding credentials eligible for sign-off authority 										
Program Duration	<p>Duration varies depending on how training is delivered, but the program generally takes 4 years to complete.</p> <p>The technical training requirement is typically met through block-release training (full-time, at school) delivered by an ITA-approved training provider. It can also be met through approved alternative training models (e.g., distance education, online, part-time) and/or level challenge where these options are available.</p>										
Sign-off Authority	<p>Credentials eligible to sign-off on the Recommendation for Certification:</p> <ul style="list-style-type: none"> ▪ Landscape Horticulturist – Certificate of Qualification ▪ Landscape Horticulturist – Interprovincial Red Seal endorsement ▪ ITA-issued letter authorizing supervision and sign-off of apprentices in this occupation 										
Challenging a Level	<p>The following levels of technical training can be challenged for advanced placement in this program:</p> <p>Level</p> <ul style="list-style-type: none"> ▪ Level 1 ▪ Level 2 ▪ Level 3 (<i>when implemented in late 2021</i>) 										



Apprenticeship Program Standards

Cross-Program Credits

Individuals who hold the credentials listed below are entitled to receive partial credit toward the completion requirements of this program

Credential

Credit(s) Granted

Production Horticulturist – Certificate of Qualification

- Work Experience: 3,240 hours

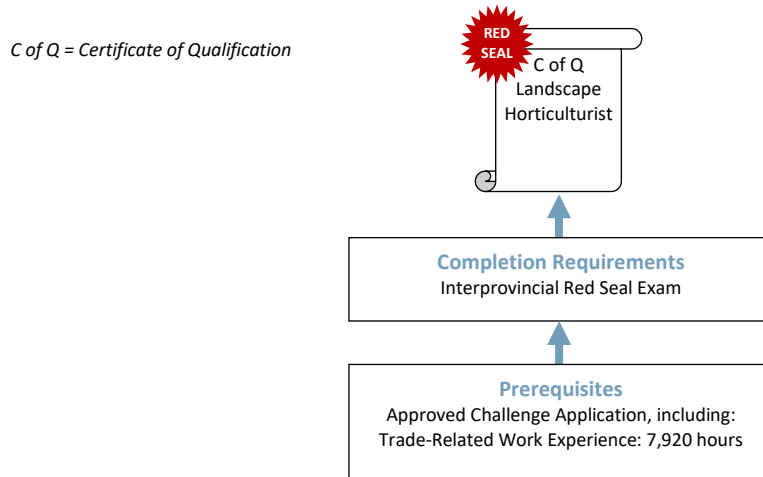
Landscape Industry Certified Technician (CLT) in Ornamental Maintenance plus one other module within the CLT program

- Technical Training: None
 - Work-Based Training: 1,000 hours
-



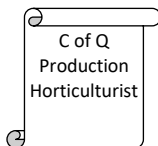
Challenge Pathway

This graphic provides an overview of the Landscape Horticulturist challenge pathway.

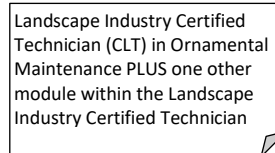


CREDIT FOR PRIOR LEARNING

Individuals who hold the credentials listed below are entitled to receive partial credit toward the completion requirements of this program



Work Experience: 3,240 hours



Work Experience: 1,000 hours



Challenge Program Standards

Credentials Awarded Landscape Horticulturist – Certificate of Qualification with Interprovincial Red Seal endorsement

ITA Registration Prerequisites An approved Challenge Application, which includes:
 ▪ 7,920 documented hours of directly related experience working in the occupation

Credit for Prior Learning Individuals who hold the credentials listed below are considered to have met, or partially met, the prerequisites for challenging this program:

Credential	Credit(s) Granted
Production Horticulturist – Certificate of Qualification	▪ Work Experience: 3,240 hours
Landscape Industry Certified Technician (CLT) certification in Ornamental Maintenance plus one other module within the CLT program	▪ Work Experience: 1,000 hours

Completion Requirements Certification as a Landscape Horticulturist is awarded upon successful completion of:

Requirement	Level of Achievement Required
Interprovincial Red Seal Exam	▪ Minimum 70%



Foundation Program

Refer to the Apprenticeship pathway credentialing model for this program to see how the Horticulture Technician Foundation program leads to apprenticeship in this trade.

Foundation Program Standards

Credentials Awarded	Landscape Horticulture– Certificate of Completion	
Enrollment Prerequisites	Contact training provider. Prerequisites vary between training institutions	
Completion Requirements	A Certificate of Completion in this program is awarded upon successful completion of:	
	Requirement	Level of Achievement Required
	Technical Training	Minimum 70% in: <ul style="list-style-type: none"> • Level 1 and 2 technical training, including ITA Standardized Horticulturist Foundation Exam
Program Duration	Duration varies depending on how training is delivered, but program takes 1080 hours	
Credit toward Apprenticeship	Individuals who complete the Landscape Horticulture Foundation program will receive the following credit toward completion of the Landscape Horticulturist apprenticeship program: <ul style="list-style-type: none"> ▪ Technical Training: Level 1 and Level 2 ▪ Work-Based Training: 500 hours 	



Supporting Documents

BC Landscape Horticulturist Program Outline (2013) – Defines the full scope of knowledge and skills required to competently perform the occupation in BC. Available from the ITA website.

Landscape Horticulturist National Occupational Analysis (2010) – Prepared by industry experts, under the guidance of the federal government, for Red Seal trades to define the national standard of competence for the trade. Available from the Red Seal website: www.red-seal.ca.

Contacts

The **Industry Training Authority** (ITA) manages B.C.'s industry training and apprenticeship programs. Contact ITA Customer service if you have any questions regarding registration, examinations or certification for this program.

Telephone: 778-328-8700
Toll Free (within BC): 1-866-660-6011
Website: www.itabc.ca

Fax: 778-328-8701
Email: customerservice@itabc.ca

Revision History

The standards for this program were reviewed and/or updated on the dates below.

Program Standards Approved: March 2002
Updated: January 2006
November 2008
June 2010
December 2011
May 2013
Program Standards Approved: October 2017

Program Profiles are updated regularly. Visit www.itabc.ca for the most current version.