

INDUSTRIAL MECHANIC (MILLWRIGHT)

Occupation Description

“Industrial Mechanic (Millwright)” means a person who dismantles, moves, installs, lays out, sets-up, repairs, commissions, overhauls and maintains all machinery and heavy mechanical equipment, including power transmissions, conveyors, hoists, pumps, compressors, alignment, fluid power and vibration analysis.

For detailed information on the scope of knowledge and skills taught and assessed in this program refer to the Program Outline, available on the ITA website.

Pathways to Certification

In BC, an individual can become certified as an Industrial Mechanic (Millwright) by completing the Industrial Mechanic (Millwright) program or by challenging the certification. Apprenticeship programs are for individuals who have an employer to sponsor them and challenge programs are for individuals who have extensive experience working in the occupation and wish to challenge the certification.

Youth can begin apprenticeship in high school through the Youth Train in Trades or Youth Work in Trades programs. The Youth Work in Trades program is available for any trade if an employer is willing to sponsor the student. Trades offered through the Youth Train in Trades program vary by region; contact your local school district to find out which technical training programs are being offered through Youth Train in Trades in your region.

Foundation programs, where available, provide adults and youth who do not have work experience or employer sponsorship with an opportunity to gain the knowledge and skills needed to enter the occupation. Individuals who wish to enroll in a Foundation program must register directly with the training provider.

Recommended Education

The following education is **recommended** for apprentices entering this occupation. These are not prerequisites, but rather a desired level of skill or knowledge that will contribute to success in the industry.

- Grade 10 or equivalent including English 10, Mathematics 10 and Science 10
- Preferred Grade 12

ITA Registration

Individuals who wish to begin an apprenticeship in this program must register with ITA along with their sponsor. Application forms for all programs are available from the ITA website. Online registration is also available for most programs through the ITA website.

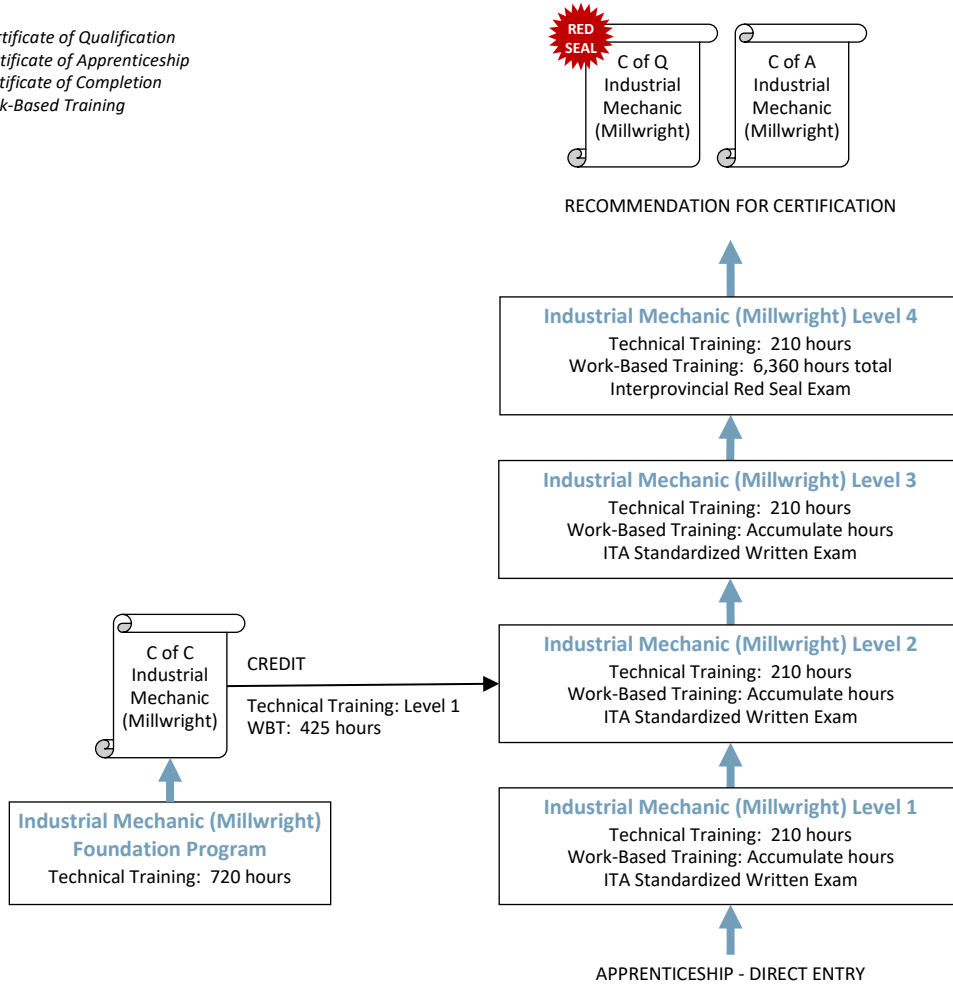
Those who wish to challenge the Industrial Mechanic (Millwright) certification must complete the Industrial Mechanic (Millwright) Challenge Application and submit it to ITA. Challenge applications are assessed for proof of workplace hours and scope of experience prior to acceptance of the individual into the Challenge pathway.



Apprenticeship Pathway

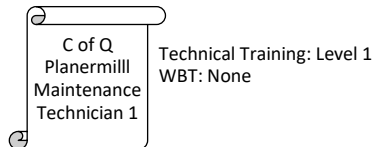
This graphic provides an overview of the Industrial Mechanic (Millwright) apprenticeship pathway.

C of Q = Certificate of Qualification
C of A = Certificate of Apprenticeship
C of C = Certificate of Completion
WBT = Work-Based Training



CROSS-PROGRAM CREDITS

Individuals who hold the credentials listed below are entitled to receive partial credit toward the completion requirements of this program





Apprenticeship Program Standards

Credentials Awarded	<ul style="list-style-type: none"> ▪ Industrial Mechanic (Millwright) – Certificate of Qualification with Interprovincial Red Seal Endorsement ▪ Industrial Mechanic (Millwright) – Certificate of Apprenticeship
----------------------------	-------------------------------------------------------------------------------------------------------------------------------------------------------------------------------------------------------------------------------------------

ITA Registration Prerequisites	<ul style="list-style-type: none"> ▪ Agreement signed by the employer to sponsor the apprentice
---------------------------------------	----------------------------------------------------------------------------------------------------------------

Completion Requirements	Certification as an Industrial Mechanic (Millwright) is awarded upon successful completion of:	
	Requirement	Level of Achievement Required
	Technical Training	Minimum 70% in each level of technical training: <ul style="list-style-type: none"> ▪ Level 1: 210 hours and ITA standardized written exam ▪ Level 2: 210 hours and ITA standardized written exam ▪ Level 3: 210 hours and ITA standardized written exam ▪ Level 4: 210 hours
	Interprovincial Red Seal Exam	<ul style="list-style-type: none"> ▪ Minimum 70%
	Work-Based Training	<ul style="list-style-type: none"> ▪ 6,360 hours
	Recommendation for Certification	<ul style="list-style-type: none"> ▪ Recommendation for certification signed by the Sponsor and an individual holding a credential eligible for sign-off authority

Program Duration	<p>Duration varies depending on how training is delivered, but the program generally takes 4 years to complete.</p> <p>The technical training requirement is typically met through block-release training (full-time, at school) delivered by an ITA-approved training provider. It can also be met through approved alternative training models (e.g., distance education, online, part-time) and/or level challenge where these options are available.</p>
-------------------------	--------------------------------------------------------------------------------------------------------------------------------------------------------------------------------------------------------------------------------------------------------------------------------------------------------------------------------------------------------------------------------------------------------------------------------------------------------------

Sign-off Authority	<p>Credentials eligible to sign-off on the Recommendation for Certification:</p> <ul style="list-style-type: none"> ▪ Industrial Mechanic (Millwright) – Certificate of Qualification ▪ Industrial Mechanic (Millwright) – Interprovincial Red Seal Endorsement ▪ ITA-issued letter authorizing supervision and sign-off of apprentices in this occupation
---------------------------	---------------------------------------------------------------------------------------------------------------------------------------------------------------------------------------------------------------------------------------------------------------------------------------------------------------------------------------------------------------------------------------------

Challenging a Level	<p>The following levels of technical training can be challenged for advanced placement in this program:</p> <ul style="list-style-type: none"> ▪ Level 1 ▪ Level 2 ▪ Level 3 (<i>when implemented</i>)
----------------------------	-----------------------------------------------------------------------------------------------------------------------------------------------------------------------------------------------------------------------------------------

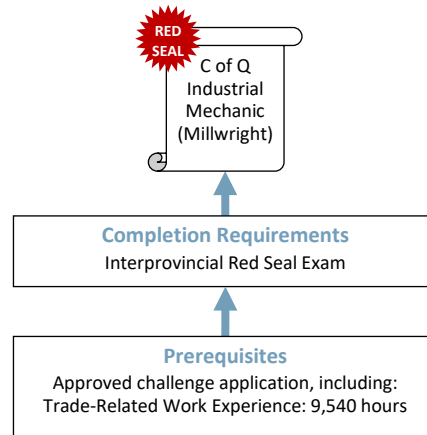
Cross-Program Credits	Individuals who hold the credentials listed below are entitled to receive partial credit toward the completion requirements of this program	
	Credential	Credit(s) Granted
	Planermill Maintenance Technician 1 – Certificate of Qualification	<ul style="list-style-type: none"> ▪ Technical Training: Level 1 ▪ Work-Based Training: None



Challenge Pathway

This graphic provides an overview of the Industrial Mechanic (Millwright) challenge pathway.

C of Q = Certificate of Qualification



CREDIT FOR PRIOR LEARNING

Individuals who hold the credentials listed below are considered to have met or partially met the prerequisites for challenging this program.

Military certificate in
 Marine Engineer
 MT #367 / Marine
 Engineering Technician
 MT #313, QL5 or
 higher

Work Experience: 9,540 hours



Challenge Program Standards

Credentials Awarded Industrial Mechanic (Millwright) – Certificate of Qualification with Red Seal Endorsement

ITA Registration Prerequisites An approved Challenge Application, which includes:

- 9,540 documented hours of directly related experience working in the occupation

Credit for Prior Learning Individuals who hold the credentials listed below are considered to have met or partially met the prerequisites for challenging this program.

Credential	Credit(s) Granted
Military certificate in Marine Engineer MT #367 / Marine Engineering Technician MT #313, QL5 or higher	<ul style="list-style-type: none"> ▪ Work Experience: 9,540 hours ▪ Approved Challenge Application

Completion Requirements Certification as a Industrial Mechanic (Millwright) is awarded upon successful completion of:

Requirement	Level of Achievement Required
Interprovincial Red Seal Exam	<ul style="list-style-type: none"> ▪ Minimum 70%



Foundation Program

Refer to the Apprenticeship pathway diagram for this program to see how the Industrial Mechanic (Millwright) Foundation program fits into apprenticeship.

Foundation Program Standards

Credentials Awarded	Industrial Mechanic (Millwright) – Certificate of Completion				
Enrollment Prerequisites	Contact training provider. Prerequisites vary between training institutions				
Completion Requirements	A Certificate of Completion in this program is awarded upon successful completion of: <table border="1" style="width: 100%; margin-top: 10px;"> <thead> <tr> <th style="width: 50%;">Requirement</th> <th style="width: 50%;">Level of Achievement Required</th> </tr> </thead> <tbody> <tr> <td>Technical Training</td> <td> <ul style="list-style-type: none"> ▪ Minimum 70% </td> </tr> </tbody> </table>	Requirement	Level of Achievement Required	Technical Training	<ul style="list-style-type: none"> ▪ Minimum 70%
Requirement	Level of Achievement Required				
Technical Training	<ul style="list-style-type: none"> ▪ Minimum 70% 				
Program Duration	Duration varies depending on how training is delivered, but the program generally takes 720 hours to complete				
Credit toward Apprenticeship	Individuals who complete the Industrial Mechanic (Millwright) Foundation program will receive the following credit toward completion of the Industrial Mechanic (Millwright) program apprenticeship program: <ul style="list-style-type: none"> ▪ Technical Training: Level 1 ▪ Work-Based Training: 425 hours 				



Supporting Documents

Industrial Mechanic (Millwright) Program Outline (2017) – Defines the full scope of knowledge and skills required to competently perform the occupation in BC. Available from ITA's website.

Industrial Mechanic (Millwright) Red Seal Occupational Standard (2016) – Prepared by industry experts, under the guidance of the federal government, for Red Seal trades to define the national standard of competence for the trade. Available from the Red Seal website: www.red-seal.ca.

Contacts

The **Industry Training Authority** (ITA) manages B.C.'s industry training and apprenticeship programs. Contact ITA Customer service if you have any questions regarding registration, examinations or certification for this program.

Telephone: 778-328-8700
Toll Free (within BC): 1-866-660-6011
Website: www.itabc.ca

Fax: 778-328-8701
Email: customerservice@itabc.ca

Revision History

The standards for this program were reviewed and/or updated on the dates below.

Program Standards Approved: March 2002
Updated: January 2006
January 2009
July 2009
November 2012
February 2017

Program Profiles are updated regularly. Visit www.itabc.ca for the most current version.