

## WELDER

---

### Occupation Description

“Welder” means a person who has training in and is capable of welding ferrous and non-ferrous metals in all positions, on both plate and/or pipe, using various welding processes. Certified welders qualify for testing with CSA, TSBC and for ASME procedures in British Columbia.

For detailed information on the scope of knowledge and skills taught and assessed in this program refer to the Program Outline, available on the ITA website.

### Pathways to Certification

In BC, an individual can become certified as a Welder by completing the Welder program or by challenging the certification. Apprenticeship programs are for individuals who have an employer to sponsor them and challenge programs are for individuals who have extensive experience working in the occupation and wish to challenge the certification.

Youth can begin an apprenticeship in high school through the Youth Train in Trades or Youth Work in Trades programs. The Youth Work in Trades program is available for any trade if an employer is willing to sponsor the student. Trades offered through the Youth Train in Trades vary by region; contact your local school district to find out which technical training programs are being offered through the Youth Train in Trades program in your region.

Foundation programs, where available, provide adults and youth who do not have work experience nor employer sponsorship with an opportunity to gain the knowledge and skills needed to enter the occupation. Individuals who wish to enroll in a Foundation program must register directly with the training provider.

### Recommended Education

The following education is recommended for apprentices entering this occupation. These are not prerequisites, but rather a desired level of skill or knowledge that will contribute to success in the industry.

- Grade 10 or equivalent; Grade 12 preferred

### ITA Registration

Individuals who wish to begin an apprenticeship in the Welder program or the Multi-Process Alloy Welding (MPAW) Endorsement program must register with ITA along with their sponsor. Application forms for all programs are available from the ITA website. Online registration is also available for most programs through the ITA website.

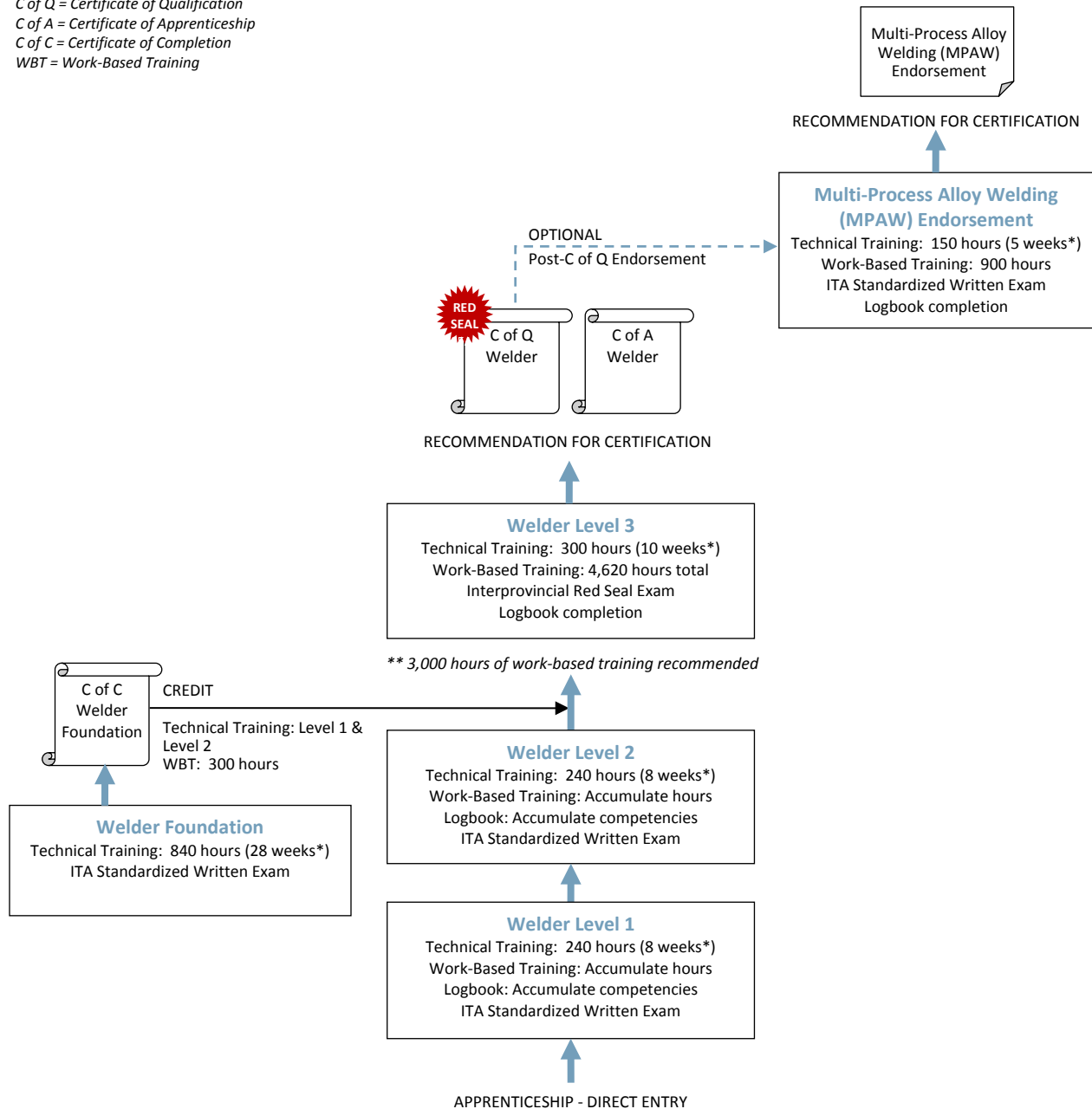
Those who wish to challenge the Welder certification must complete the Welder Challenge Application and submit it to ITA. Challenge applications are assessed for proof of workplace hours and scope of experience prior to acceptance of the individual into the Challenge pathway.

Those who wish to challenge the Multi-Process Alloy Welding (MPAW) Endorsement must complete the Multi-Process Alloy Welding (MPAW) Endorsement Challenge Application and submit it to ITA. Challenge applications are assessed for proof of workplace hours and scope of experience prior to acceptance of the individual into the Challenge pathway.

## Apprenticeship Pathway

This graphic provides an overview of the Welder apprenticeship pathway.

*C of Q = Certificate of Qualification*  
*C of A = Certificate of Apprenticeship*  
*C of C = Certificate of Completion*  
*WBT = Work-Based Training*



\*Suggested duration based on 30-hour week

\*\* 3,000 hours of work-based training recommended prior to entering Level 3 Technical Training (hours to be verified by Sponsor/Employer)

### CROSS-PROGRAM CREDITS

Individuals who hold the credentials listed below are entitled to receive partial credit toward the completion requirements of this program

None

### Apprenticeship Program Standards

<b>Credentials Awarded</b>	<ul style="list-style-type: none"> <li>▪ Welder – Certificate of Qualification with Interprovincial Red Seal endorsement</li> <li>▪ Welder – Certificate of Apprenticeship</li> </ul>
----------------------------	---

<b>ITA Registration Prerequisites</b>	<ul style="list-style-type: none"> <li>▪ Agreement signed by the employer to sponsor the apprentice</li> </ul>
---------------------------------------	--

**Completion Requirements** Certification as a Welder is awarded upon successful completion of:

Requirement	Level of Achievement Required
Technical Training	Minimum 70% in each level of technical training: <ul style="list-style-type: none"> <li>▪ Level 1: 240 hours (or 8 weeks*) and ITA Standardized Written Exam</li> <li>▪ Level 2: 240 hours (or 8 weeks*) and ITA Standardized Written Exam</li> <li>▪ Level 3: 300 hours (or 10 weeks*)</li> </ul>
Interprovincial Red Seal Exam	<ul style="list-style-type: none"> <li>▪ Minimum 70%</li> </ul>
Work-Based Training	<ul style="list-style-type: none"> <li>▪ 4,620 hours</li> </ul>
Recommendation for Certification	<ul style="list-style-type: none"> <li>▪ Recommendation for certification signed by the Sponsor and an individual holding credentials eligible for sign-off authority</li> </ul>
Welder Logbook	<ul style="list-style-type: none"> <li>▪ Signoff on required Levels of Technical Training and hours</li> </ul>

(\*Assuming 30 hours in school per week)

Holders of the Welder – Certificate of Qualification with Interprovincial Red Seal Endorsement can register for the Multi-Process Alloy Welding (MPAW) Endorsement training. This advanced level of training will appear as an endorsement on the original Welder Certificate of Qualification.

<b>Program Duration</b>	<p>Duration varies depending on how training is delivered, but the program generally takes three years to complete.</p> <p>The technical training requirement is typically met through block-release training (full-time, at school) delivered by an ITA-approved training provider. It can also be met through approved alternative training models (e.g., distance education, online, part-time) and/or level challenge where these options are available.</p>
-------------------------	--

<b>Sign-off Authority</b>	<p>Credentials eligible to sign-off on the Recommendation for Certification:</p> <ul style="list-style-type: none"> <li>▪ BC Welder B – Certificate of Qualification</li> <li>▪ BC Welder A – Certificate of Qualification</li> <li>▪ BC Welder – Certificate of Qualification with Interprovincial Red Seal endorsement</li> <li>▪ Welder – Interprovincial Red Seal endorsement</li> </ul>
---------------------------	--

<b>Challenging a Level</b>	<p>The following levels of technical training can be challenged for advanced placement in this program:</p> <ul style="list-style-type: none"> <li>▪ None</li> </ul>
----------------------------	--



**Apprenticeship Program Standards**

**Cross-Program Credits**

Individuals who hold the credentials listed below are entitled to receive partial credit toward the completion requirements of this program:

Credential	Credit(s) Granted
Welder C – Certificate of Qualification	<ul style="list-style-type: none"> <li>▪ Technical Training: Level 1 &amp; Level 2</li> <li>▪ Work-Based Training: All accumulated hours</li> </ul>
Welder B – Certificate of Qualification	<ul style="list-style-type: none"> <li>▪ Technical Training: Level 1, Level 2 &amp; Level 3</li> <li>▪ Work-Based Training: All accumulated hours</li> </ul>

### Multi-Process Alloy Welding (MPAW) Endorsement Program

Refer to the Apprenticeship pathway credentialing model for this program to see how the Multi-Process Alloy Welding (MPAW) Endorsement program fits into the apprenticeship pathway for this occupation.

#### Multi-Process Alloy Welding (MPAW) Endorsement Program Standards

Credentials Awarded	<ul style="list-style-type: none"> <li>▪ Multi-Process Alloy Welding (MPAW) Endorsement</li> </ul>												
ITA Registration Pre-requisites	<ul style="list-style-type: none"> <li>▪ Welder – Certificate of Qualification with Interprovincial Red Seal endorsement Or</li> <li>▪ Welder B – Certificate of Qualification with Interprovincial Red Seal endorsement</li> </ul>												
Completion Requirements	<p>A Multi-Process Alloy Welding (MPAW) Endorsement will be awarded and included on the apprentice's original Welder Certificate of Qualification upon successful completion of:</p> <table border="1" style="width: 100%; border-collapse: collapse;"> <thead> <tr> <th style="text-align: left;">Requirement</th> <th style="text-align: left;">Level of Achievement Required</th> </tr> </thead> <tbody> <tr> <td>Technical Training</td> <td>                     Minimum 70% in technical training:                     <ul style="list-style-type: none"> <li>▪ Single level: 150 hours (or 5 weeks*)</li> </ul> </td> </tr> <tr> <td>ITA Standardized Written Exam</td> <td> <ul style="list-style-type: none"> <li>▪ Minimum 70%</li> </ul> </td> </tr> <tr> <td>Work-Based Training</td> <td> <ul style="list-style-type: none"> <li>▪ 900 hours</li> </ul> </td> </tr> <tr> <td>Recommendation for Certification</td> <td> <ul style="list-style-type: none"> <li>▪ Recommendation for certification signed by the Sponsor and an individual holding credentials eligible for sign-off authority</li> </ul> </td> </tr> <tr> <td>Welder Logbook</td> <td> <ul style="list-style-type: none"> <li>▪ Signoff on required competencies and hours</li> </ul> </td> </tr> </tbody> </table> <p>(*Assuming 30 hours in school per week)</p>	Requirement	Level of Achievement Required	Technical Training	Minimum 70% in technical training: <ul style="list-style-type: none"> <li>▪ Single level: 150 hours (or 5 weeks*)</li> </ul>	ITA Standardized Written Exam	<ul style="list-style-type: none"> <li>▪ Minimum 70%</li> </ul>	Work-Based Training	<ul style="list-style-type: none"> <li>▪ 900 hours</li> </ul>	Recommendation for Certification	<ul style="list-style-type: none"> <li>▪ Recommendation for certification signed by the Sponsor and an individual holding credentials eligible for sign-off authority</li> </ul>	Welder Logbook	<ul style="list-style-type: none"> <li>▪ Signoff on required competencies and hours</li> </ul>
Requirement	Level of Achievement Required												
Technical Training	Minimum 70% in technical training: <ul style="list-style-type: none"> <li>▪ Single level: 150 hours (or 5 weeks*)</li> </ul>												
ITA Standardized Written Exam	<ul style="list-style-type: none"> <li>▪ Minimum 70%</li> </ul>												
Work-Based Training	<ul style="list-style-type: none"> <li>▪ 900 hours</li> </ul>												
Recommendation for Certification	<ul style="list-style-type: none"> <li>▪ Recommendation for certification signed by the Sponsor and an individual holding credentials eligible for sign-off authority</li> </ul>												
Welder Logbook	<ul style="list-style-type: none"> <li>▪ Signoff on required competencies and hours</li> </ul>												
Program Duration	<p>Duration varies depending on how training is delivered, but the program generally takes one year to complete.</p> <p>The technical training requirement is typically met through block-release training (full-time, at school) delivered by an ITA-approved training provider. It can also be met through approved alternative training models (e.g., distance education, online, part-time) and/or level challenge where these options are available.</p>												
Sign-off Authority	<p>Credentials eligible to sign-off on the Recommendation for Certification:</p> <ul style="list-style-type: none"> <li>▪ BC Welder A – Certificate of Qualification with Interprovincial Red Seal endorsement</li> <li>▪ BC Welder – Certificate of Qualification with Interprovincial Red Seal endorsement and Multi-Process Alloy Welding (MPAW) endorsement</li> </ul>												
Challenging a Level	<p>The following levels of technical training can be challenged for advanced placement in this program:</p> <ul style="list-style-type: none"> <li>▪ None</li> </ul>												



**Foundation Program**

Refer to the Apprenticeship pathway credentialing model for this program to see how the Welder Foundation program fits into the apprenticeship pathway for this occupation.

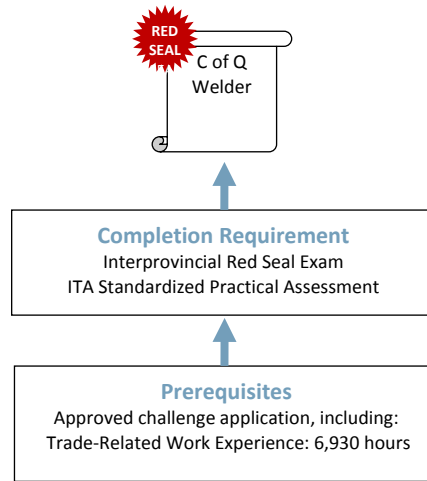
**Foundation Program Standards**

<b>Credentials Awarded</b>	Welder – Certificate of Completion	
<b>Enrollment Pre-requisites</b>	Contact training provider. Prerequisites vary between training institutions.	
<b>Completion Requirements</b>	A Certificate of Completion in this program is awarded upon successful completion of:	
	<b>Requirement</b>	<b>Level of Achievement Required</b>
	Technical Training and ITA standardized written exam	Minimum 70% in technical training, including ITA standardized written exam
<b>Program Duration</b>	Duration varies depending on how training is delivered, but the program generally takes 28 weeks to complete, assuming 30 hours in school per week	
<b>Credit toward Apprenticeship</b>	Individuals who complete the Welder Foundation program will receive the following credit toward completion of the Welder apprenticeship program: <ul style="list-style-type: none"> <li>▪ Technical Training: Level 1 &amp; Level 2</li> <li>▪ Work-Based Training: 300 hours</li> </ul>	

### Challenge Pathway

This graphic provides an overview of the Welder challenge pathway.

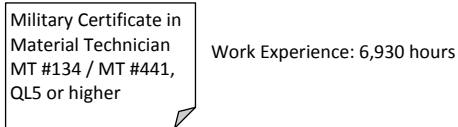
*C of Q = Certificate of Qualification*




---

#### CREDIT FOR PRIOR LEARNING

*Individuals who hold the credentials listed below are entitled to receive partial credit toward the completion requirements of this program*





### Challenge Program Standards

**Credentials Awarded** Welder – Certificate of Qualification with Interprovincial Red Seal endorsement

**ITA Registration Prerequisites** An approved Challenge Application, which includes:

- 6,930 documented hours of directly related experience working in the occupation

**Credit for Prior Learning** Individuals who hold the credentials listed below are considered to have met, or partially met, the prerequisites for challenging this program:

Credential	Credit(s) Granted
Military certificate in Material Technician MT #134 / MT #441, QL5 or higher	<ul style="list-style-type: none"> <li>▪ Work Experience: 6,930 hours</li> <li>▪ Approved Challenge Application</li> </ul>

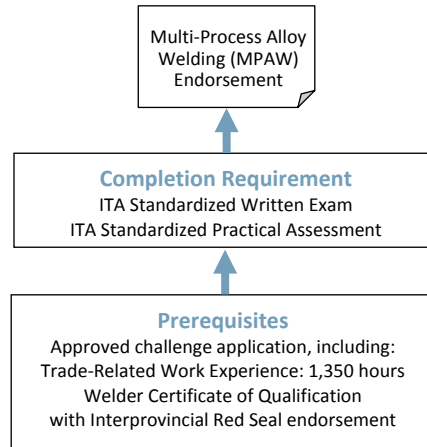
**Completion Requirements** Certification as a Welder is awarded upon successful completion of:

Requirement	Level of Achievement Required
Welder Interprovincial Red Seal Exam	▪ Minimum 70%
ITA Standardized Practical Assessment	<ul style="list-style-type: none"> <li>▪ Declared Competent</li> </ul> <p><i>Note: Successful completion of the ITA Certificate of Qualification exam is required before attempting the practical assessment</i></p>



### Challenge Pathway

This graphic provides an overview of the Multi-Process Alloy Welding (MPAW) Endorsement challenge pathway.




---

#### CREDIT FOR PRIOR LEARNING

*Individuals who hold the credentials listed below are entitled to receive partial credit toward the completion requirements of this program*

None



**Challenge Program Standards – Multi-Process Alloy Welding (MPAW) Endorsement**

<b>Credentials Awarded</b>	Welder – Multi-Process Alloy Welding (MPAW) endorsement	
<b>ITA Registration Prerequisites</b>	An approved Challenge Application, which includes: <ul style="list-style-type: none"> <li>▪ 1,350 documented hours of directly related experience working in the occupation</li> <li>▪ Welder Certificate of Qualification with Interprovincial Red Seal endorsement</li> <li style="text-align: center;">Or</li> <li>▪ Welder B – Certificate of Qualification with Interprovincial Red Seal endorsement</li> </ul>	
<b>Credit for Prior Learning</b>	Individuals who hold the credentials listed below are considered to have met, or partially met, the prerequisites for challenging this program:	
	<b>Credential</b>	<b>Credit(s) Granted</b>
	None	<ul style="list-style-type: none"> <li>▪ N/A</li> </ul>
<b>Completion Requirements</b>	A Multi-Process Alloy Welding (MPAW) endorsement will be awarded and added to the challenger's original Welder Certificate of Qualification upon successful completion of:	
	<b>Requirement</b>	<b>Level of Achievement Required</b>
	ITA Standardized Written Exam	<ul style="list-style-type: none"> <li>▪ Minimum 70%</li> </ul>
	ITA Standardized Practical Assessment	<ul style="list-style-type: none"> <li>▪ Declared Competent</li> </ul> <p style="margin-left: 20px;"><i>Note: Successful completion of the ITA Certificate of Qualification Exam is required before attempting the practical assessment</i></p>

## Supporting Documents

BC Welder Program Outline (2016) – Defines the full scope of knowledge and skills required to competently perform the occupation in BC. Available from the ITA website.

Welder National Occupational Analysis (2013) – Prepared by industry experts, under the guidance of the federal government, for Red Seal trades to define the national standard of competence for the trade. Available from the Red Seal website: [www.red-seal.ca](http://www.red-seal.ca).

BC Welder Logbook – Documents all Welder modules, endorsements, employment records, Canadian Welding Bureau (CWB) and Technical Safety BC (TSBC) tickets. Issued to Welder apprentice by ITA-approved training provider; issued to Welder challenger by ITA.

## Contacts

The **Industry Training Authority** (ITA) manages B.C.'s industry training and apprenticeship programs. Contact ITA Customer service if you have any questions regarding registration, examinations or certification for this program.

Telephone: 778-328-8700  
Toll Free (within BC): 1-866-660-6011  
Website: [www.itabc.ca](http://www.itabc.ca)

Fax: 778-328-8701  
email: [customerservice@itabc.ca](mailto:customerservice@itabc.ca)

## Revision History

The standards for this program were reviewed and/or updated on the dates below.

Program Approved: August 2016  
Updated: October 2013  
July 2015  
March 2017

Program Profiles are updated on a regular basis. Visit [www.itabc.ca](http://www.itabc.ca) for the most current version.